

VC SYSTEMS & CONTROLS

THE PUMP ROOM

Volume 1, Issue 1
December 15, 2009

INTRODUCING ZOELLER PUMP

VC Systems is happy to announce the addition of **Zoeller** Engineered Products to our line of superior pumping products. **Zoeller** offers a full line of submersible sump, sewage and wastewater products and accessories.

40 years of experience by **VC Systems** in the commercial building trades market offers our customers the assurance of quality in the design, sales & service that they have grown to expect from our team.

With the **Zoeller** line of products, we can service your needs from the smallest sump & effluent application to the large, solids handling waste water pumping stations. They offer submersible pumps for standard installations as well as NEMA 7, Explosion Proof needs.

VC Systems will offer the **Zoeller** Products as pumping components and controls for the contractor's field installation, or as packaged pumping stations with fiberglass basing, aluminum covers, slide rail systems for ease of removal and service, and control panels for every need.

All this and the same service that you have learned to expect, from design concepts, full AutoCad design, field installation assistance, and field commissioning.



Inside this issue:

System of the Month	2
VC Systems—Contacts	2
UL Package Listing	2
Vendor Spotlight	3
Cartridge Seals	3

Special points of interest:

- VC System Now selling Direct in Central Florida.
- VC Systems Now offering quick ship on duplex systems, VFD, Constant Speed, and "Powermizer" in two power supplies – 208/3 and 460/3. Call for Quote & Lead Time.
- VC Systems introduces new 7" and 10" Color Touch Screen Operator Interface.



Merry Christmas

2009

VC Systems & Controls, Inc.

"For Future Generations"

Henry Vickery

VC SYSTEMS & CONTROLS
CUSTOM PACKAGED PUMPING SYSTEMS

Systems Beyond Measure

VC Systems Contact List:

Ph 813-987-2151 Fx 813-986-6536



VC Systems & Controls, Inc.
 8811 Venture Cove Tampa, Florida
 (800) 881-3123

MODEL NUMBER SERIAL NUMBER



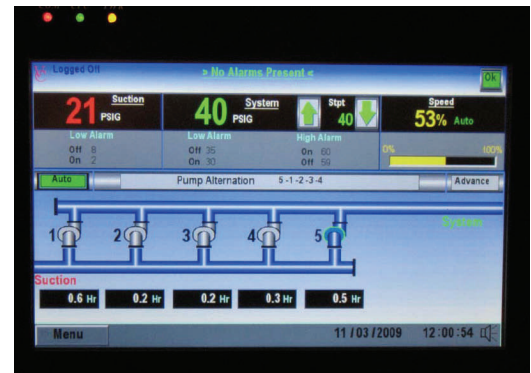
PACKAGED PUMPING SYSTEMS
 30BF-QCZJE185672

- Jon Vickery Inside Sales jon@vcsystems.net
- Carlos Rivera Outside Sales carlos@vcsystems.net
- Mike Trautman Technical Support mike@vcsystems.net
- Katherine Suits Accounting kate@vcsystems.net
- Chris Suits Production chris@vcsystems.net
- Henry Vickery Founder henry@vcsystems.net

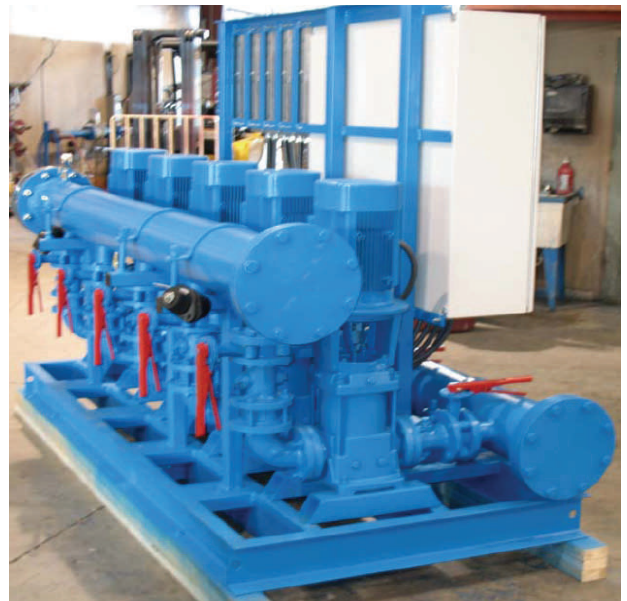
SYSTEM OF THE MONTH:
Youngstown Air Force Base



VC Systems & Controls, Inc.



- Model 5VC-VFD-G-CR32-2-1-7.5 Vertical Pumps
- System: 900 GPM at 35 PSI Boost
- ABB ACH550 Variable Frequency Drives
- 7" Color Touch Screen Operator Interface
- 8" X 2.5" Headers, 304 Stainless Steel Piping, Double Ended
- VC Controls, NEMA 4, UL Type 1, UL508A Control Panel
- Additive Mode with Automatic & Manual Alternation
- Supplied with Flexible Connectors and Vibration Mountings



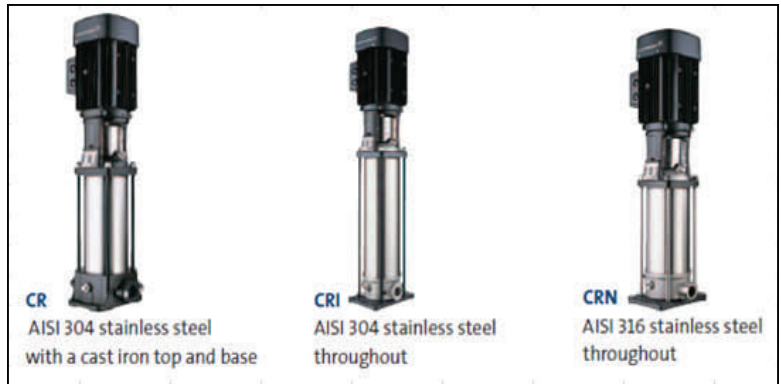
VC SYSTEMS & CONTROLS

8811 Venture Cove
Tampa, Florida 33637

Phone: 813-987-2151
Fax: 813-95-6536
E-mail: henry@vcsystems.net
Henry Vickery

Systems Beyond Measure

We are on the Web
www.vcsystems.net



Vendor Spotlight:

GRUNDFOS 

- WIDE RANGE OF SIZES
- CHOICE OF MATERIALS - CI/304 S/S, 304 S/S & 316 S/S
- HIGH PERFORMANCE HYDRAULICS
- SUPERIOR DRY RUN PERFORMANCE
- CARTRIDGE MECHANICAL SEAL

Unique cartridge seal design

The seal used in the CR line combines the best features of standard seals, wrapped up in an ingenious cartridge design. All of these ensure extra reliability.

The durable seal is made from hardwearing materials which prevent downtime and extend the lifetime of the seal. All axial movement has been eliminated, preventing wear of the shaft and rubber parts – a problem for traditional seals. The cartridge seal is a balanced type seal, which makes it less sensitive to pressure.

We know, however, that even the best of materials are subject to wear. That is why the innovative team at Grundfos set out to eliminate the small, yet crucial, factors that can have a negative impact on pump reliability. Many of these have to do with handling, assembly and service.

The cartridge design ensures that the seal components will never be assembled incorrectly, the spring will never be incorrectly preloaded, and that sensitive surfaces will never be subjected to greasy fingers or dirt. These factors are common causes of short seal life in other pumps.

The cartridge design also enables rapid replacement when the seal ultimately does need changing. All in all, downtime is minimized, which translates into significant savings for your business.

Spacer coupling minimizes downtime too

Minimizing downtime is part of a reliable operation. That is why Grundfos has eliminated a major nuisance for owners of large pumps. Now, it is no longer necessary to remove heavy motors to replace the seal. With the innovative spacer coupling, all motors weighing more than 75 lbs. can be left in place during seal replacement.



With unfailing attention to reliability, the Grundfos engineers have designed an innovative cartridge seal that can be replaced within minutes – just one of the remarkable benefits it offers.